

# 美国研究型图书馆发展方向案例

李欣

2017.9.26

borrow direct

instructional services

online repositories



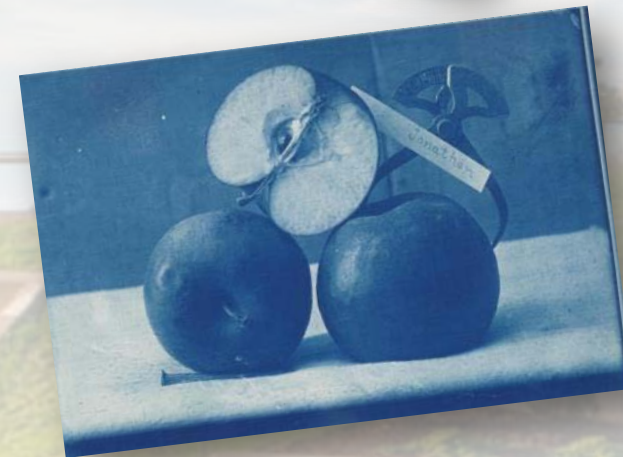


# Cornell University Library





Cornell University Library







《送叔永回四川》

胡适

一九一八

你还记得，绮色佳城，凯约嘉湖上，  
 山前山后，多少瀑布奇绝，  
 更添上远远的一线湖光；  
 瀑溪的秋色，西山的落日，真个无双；  
 还有那到枕的涛声，夜夜像聚雨打秋林一样？  
 那是你和我最难忘的“第二故乡”。  
 如今回想，  
 往日的交情，旧游的风景，  
 一半在你我的诗囊，一半在梦魂中来往

Do you still remember Ithaca, above Cayuga Lake,  
 Between hill and hill so many waterfalls of wondrous beauty?  
 And beyond, the far distant single thread of the shining lake,  
 Fall colors on cascading waters, West Hill sunsets? There is no equal.  
 Remember the sound of a running stream coming close up to your pillow  
 Night after night, like a rainstorm beating an autumn forest?  
 That is our unforgettable "second hometown."  
 Today it is all with me again:  
 The friendships of departed days, the landscapes of our old wanderings  
 Half in the poems by you and me; half in the comings and goings of dreams.  
 Hu Shih, "Seeing Ren Hongjun off to Sichuan." (1918)

胡适

# 1793-1794马戛尔尼航海日志



1793-1794

The Bay of Peking, 1793, April 17th.

1793-1794

A view of the Land and Bay of Peking on the 17th of April, 1793, from the Ship, Lat<sup>n</sup> 39. 45 N Long<sup>th</sup> 116. 44 E



## 报告内容

馆藏：常青藤+（Ivy Plus）

服务：Digital Curation Network

契机：Ithaka 农学科研支撑研究报告

动态：服务、岗位、应聘条件



## 常青藤+ (Ivy Plus) 项目

Brown

布朗

Columbia

哥伦比亚

Cornell

康奈尔

Dartmouth

达特茅斯

Duke

杜克

Harvard

哈佛

Johns Hopkins

霍普金斯

MIT

麻省理工

Princeton

普林斯顿

Stanford

斯坦福

Chicago

芝加哥

Penn

宾夕法尼亚

Yale

耶鲁

19个团队

合资聘用协调主任  
三个合作模式

# 纸本书项目

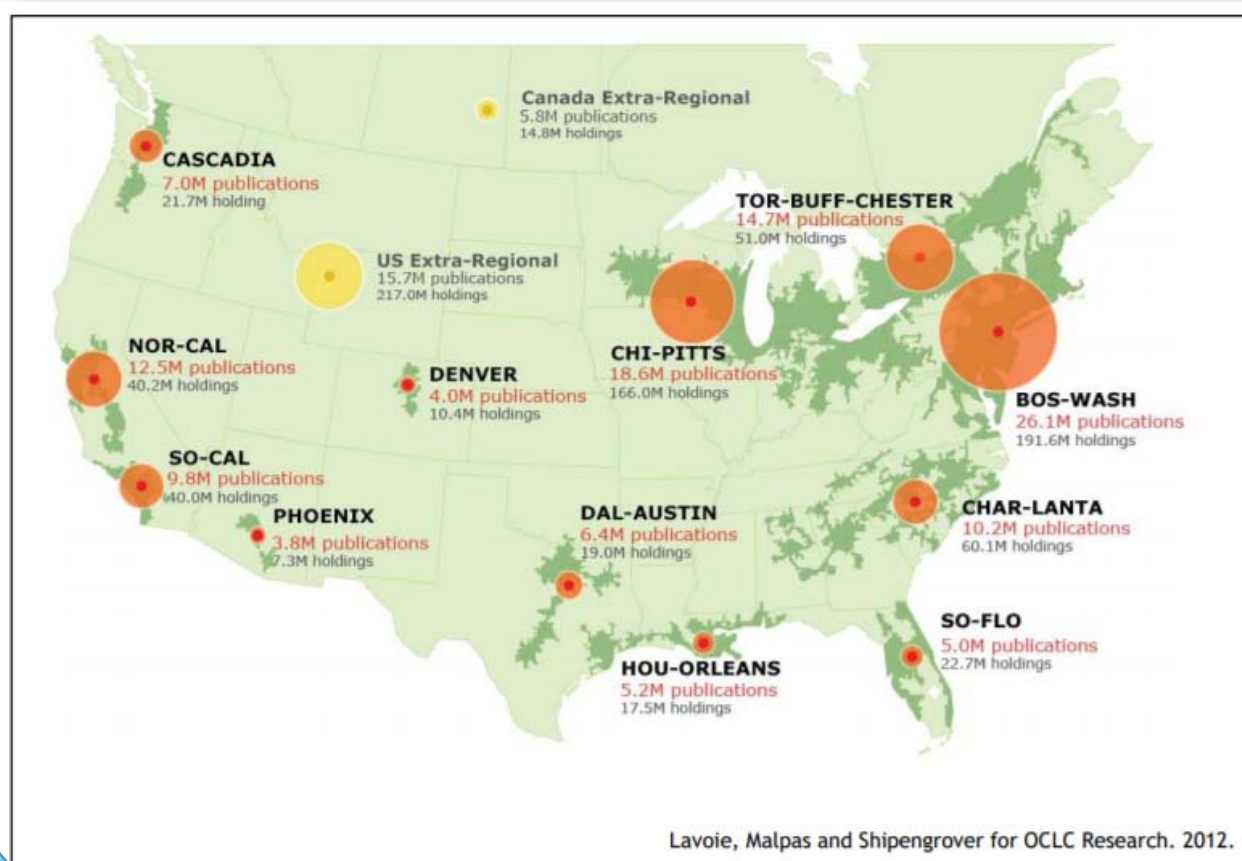
## 拥有一本书的投资

Cost Element	Shelving Model			
	Open Stack	High Density	Hybrid (10 years in open stack)	Hybrid (20 years in open stack)
Construction	108.51	16.40	32.36	43.21
Maintenance	16.69	1.24	5.66	8.99
Cleaning	3.64	0.28	1.32	2.09
Electricity (heating and cooling)	2.39	0.20	1.03	1.53
Base staffing	6.08	1.20	2.42	3.36
Circulation	4.58	9.45	8.19	7.25
Total	141.89	28.77	50.98	66.43
Annual Average	4.26	0.86	1.53	1.99

Table 1: Our best storage cost estimates (in 2009 US\$)

10年开架  
\$1.53/本

20年开架  
\$1.99/本



Map of the North American mega-regional print book collections. The size of the circles is proportional to the number of print book publications in each region. (Note: The size of the circles is proportional to the number of print book publications in each region.)

## 纸本书项目

- 合资购买，共同拥有
- 永久保存
- 未来分析与改善
- 采编流程
- 存放地点
- HathiTrust
- OCLC
- 其它馆际合作

# Digital Curation Network (DCN)

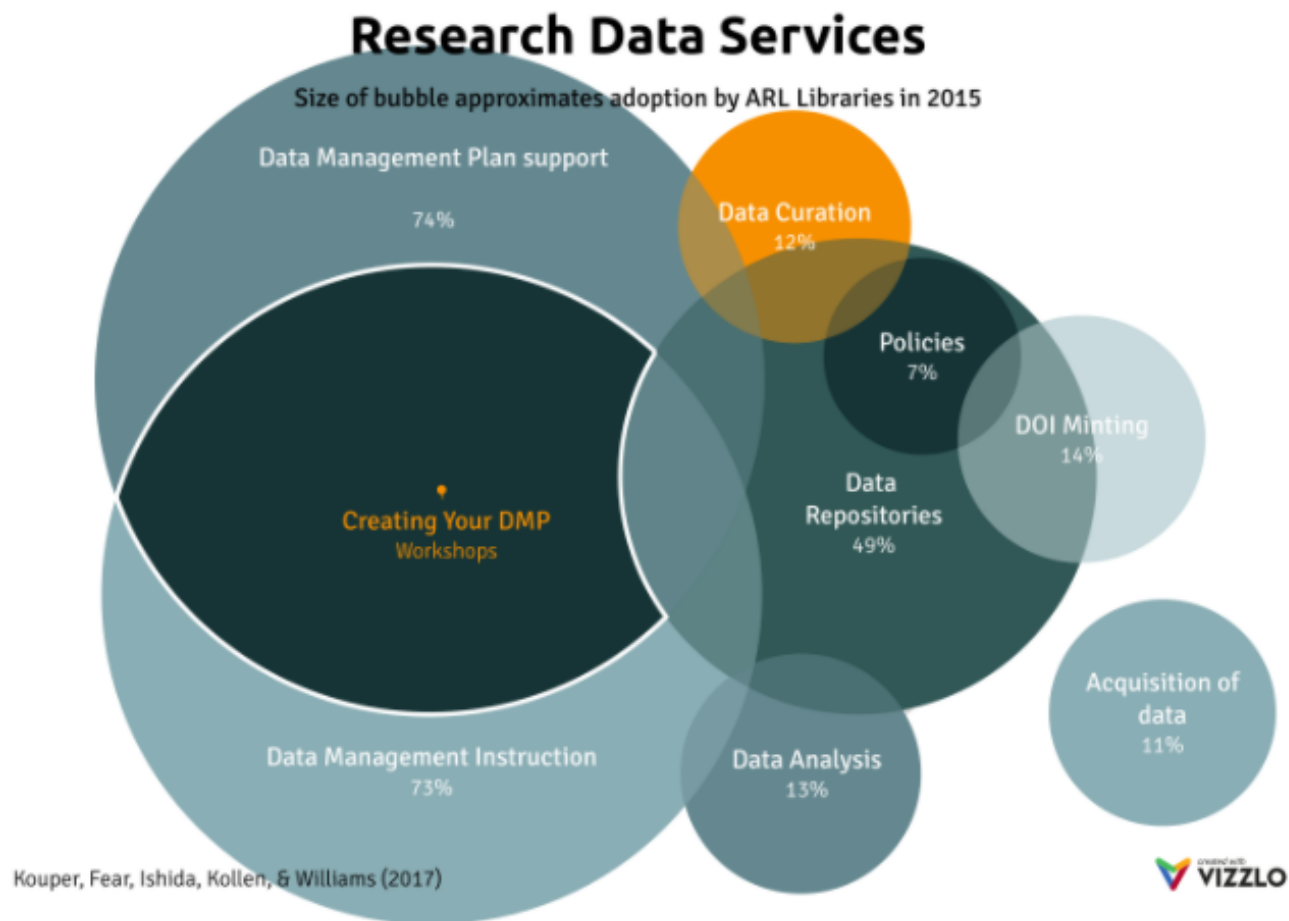
## Alfred P. Sloan基金会 2016-2017一期探索项目

- 明尼苏达
- 密歇根
- 宾夕法尼亚州立
- 华盛顿（圣路易斯）
- 伊利诺
- 康奈尔

Figure 1: Data curation as a component of research data services

## 服务弱区

1. 挑选
2. 试运行文档
3. 补缺
4. 元数据
5. 文件格式转换
6. FAIR\*核实



Source: As quoted in <http://tinyurl.com/yapsvmwr>. p. 13

\* FAIR=Findable, Accessible, Interoperable and Re-usable Data

DCN项目二期：  
2018.1. – 2020.12.

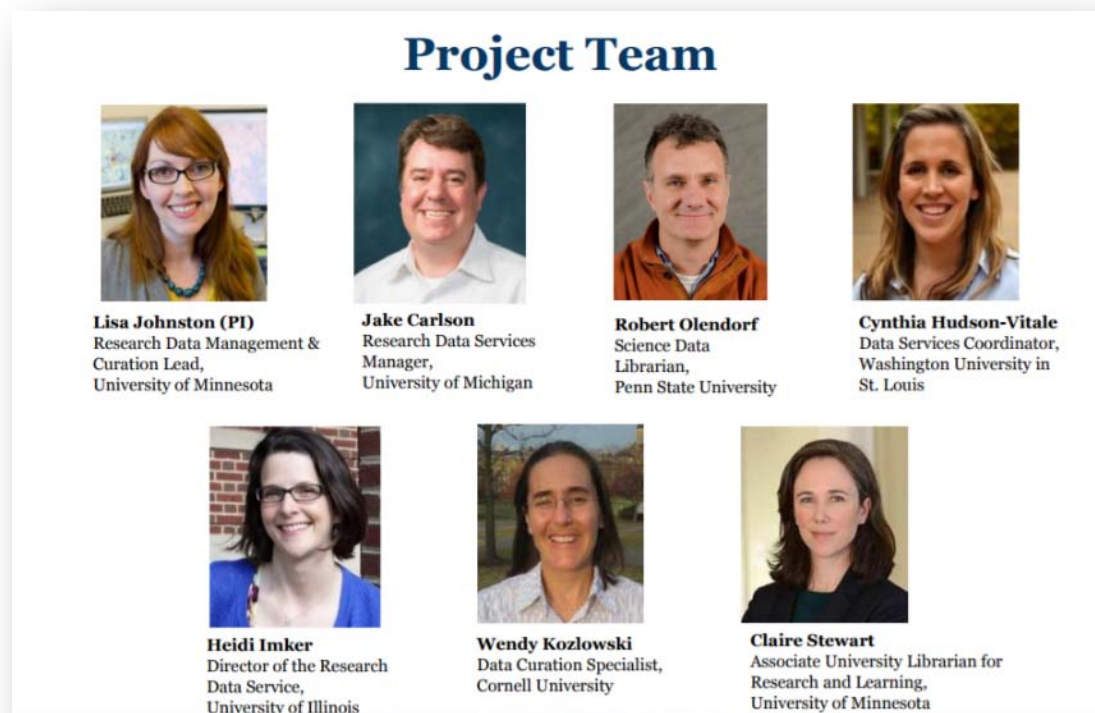


Image source: <http://bit.ly/2h8OkqH>

动态跟踪

<https://sites.google.com/site/datacurationnetwork/results>

# 科研数据管理

## Data Management Services at Cornell

### Service areas

- Collaboration tools
- Data collection and analysis
- Data sharing
- High performance computing
- Intellectual property and copyright
- Metadata
- Security, privacy, and confidentiality
- Storage, backup, and recovery

细节:

<https://data.research.cornell.edu/>



# 科研数据管理服务

Institute for Social and Economic  
Research

社科经济研究学院

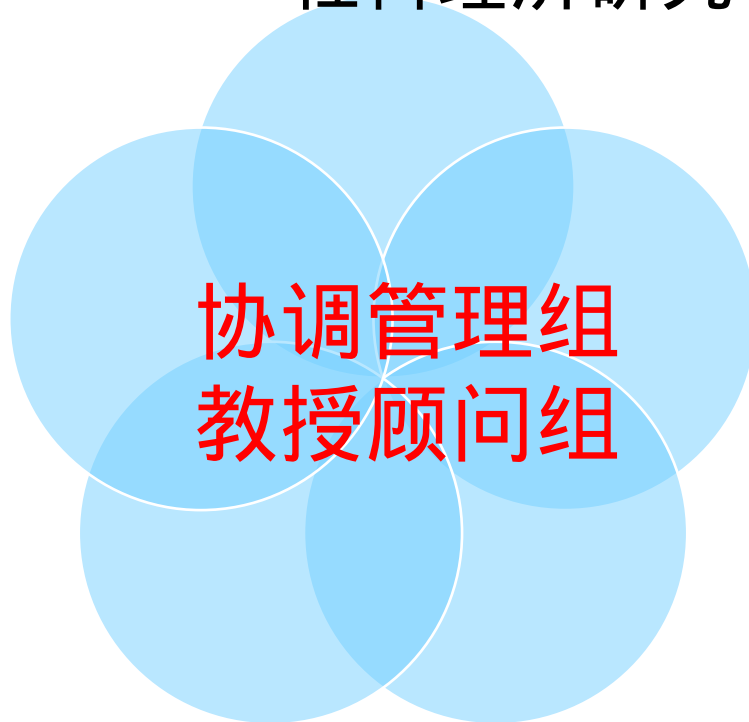
Center for  
Advanced  
Computing  
高级计算中心

IT Security

协调管理组  
教授顾问组

Office of  
Information  
Technology  
计算机中心

图书馆



Ithaka S+R2017研究报告

研究方法  
契机

## 特点

- 全球重要性
- 覆盖面
- 合作传统
- 竞争
- 开放获取
- 数据分散
- 经费不足
- 职责不明确

契机

## 三类10项服务

- 发现系统
- 学生技能
- 科研数据管理及利用全过程+软硬件
- 社交圈和期刊目录
- 普及宣传



全文：  
<http://tinyurl.com/y8sjo4sx>

动态  
服务、岗位、技能

馆内联手参与教学，咨  
询，研究, Wikipedia

# 服务：系统性审核

Systematic Review

- Scoping Review 查新
- Systematic Review 系统性审核


跟踪

<https://www.library.cornell.edu/services/systematic-review>

系统分析馆员  
Systematic Review Librarian

**Table 8.4.a: A common classification scheme for bias**

Type of bias	Description	Relevant Collaborators
Selection bias.	Systematic differences between baseline characteristics of the groups that are compared.	<ul style="list-style-type: none"><li>• Selection</li><li>• Allocation</li></ul>
Performance bias.	Systematic differences between groups in the care that is provided, or in exposure to factors other than the interventions of interest.	<ul style="list-style-type: none"><li>• Blinding of participants and personnel</li><li>• Other</li></ul>
Detection bias.	Systematic differences between groups in how outcomes are determined.	<ul style="list-style-type: none"><li>• Blinding of outcome assessors</li><li>• Other</li></ul>
Attrition bias.	Systematic differences between groups in how outcomes are determined.	<ul style="list-style-type: none"><li>• Blinding of outcome assessors</li><li>• Other</li></ul>



Contents lists available at [ScienceDirect](#)

## Sleep Medicine Reviews

journal homepage: [www.elsevier.com/locate/smr](http://www.elsevier.com/locate/smr)

CLINICAL REVIEW

### Positive affect and sleep: A systematic review

Anthony D. Ong<sup>a,\*</sup>, Sara Kim<sup>a</sup>, Sarah Young<sup>b</sup>, Andrew Steptoe<sup>c</sup>

<sup>a</sup> Cornell University, Department of Human Development, Ithaca, NY, USA  
<sup>b</sup> Cornell University, Albert R. Mann Library, Ithaca, NY, USA  
<sup>c</sup> University College London, Department of Epidemiology and Public Health, London, UK

Image source: Higgins JPT, Green S (editors). Cochrane Handbook for Systematic Reviews of Interventions Version 5.1.0 [updated March 2011]. The Cochrane Collaboration, 2011. Available from [www.handbook.cochrane.org](http://www.handbook.cochrane.org).

# 岗位：应用社会科学馆员

Applied Social Sciences Librarian

- 教学研究动态
- 数据源
- 统计分析
- 可视化工具
- GIS 工具



技能：元数据馆员  
Metadata Librarian

## 应聘必备条件

- 图情
- MARC和非MARC
- OpenRefine, Python, XSLT
- 关联数据，包括RDF和本体原理
- 学新技术，新元数据标准的能力
- 项目组织及管理能力
- 强烈的读者服务意识
- 团队精神和交流能力

思考



# 一带一路图书馆

图片来源: Bart Booms. <https://flic.kr/p/kWidcj>

TEEAL项目：涉农研究必备期刊图书馆  
90+出版社 450种期刊 无需网络

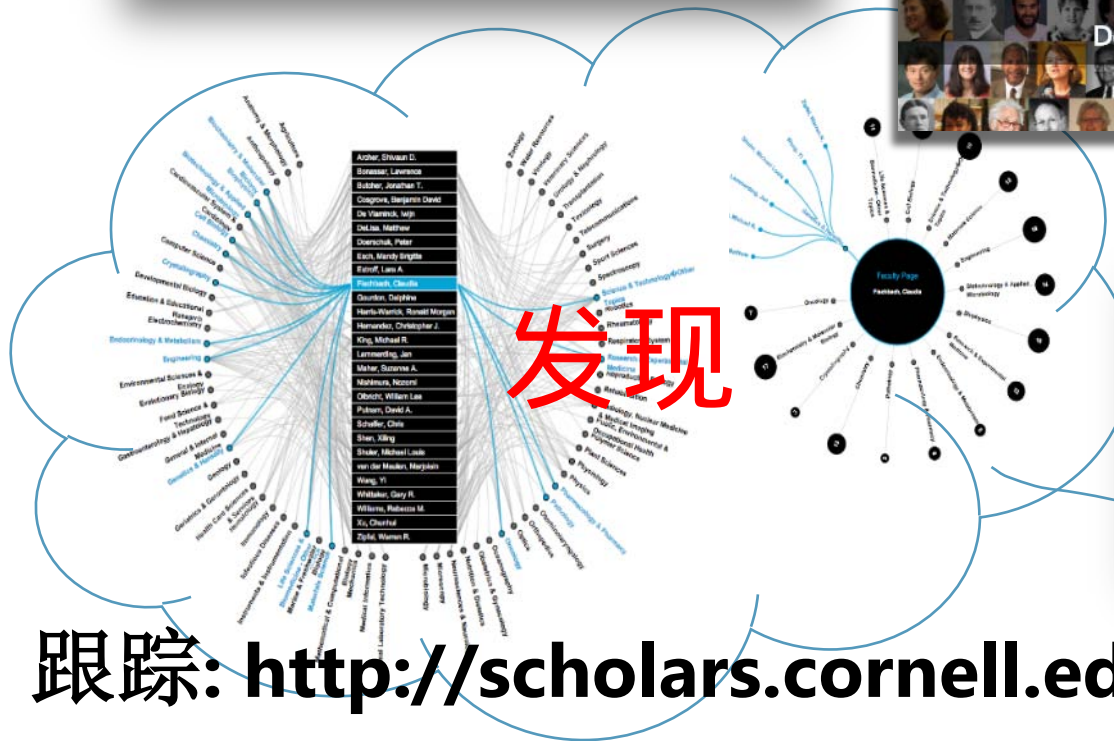
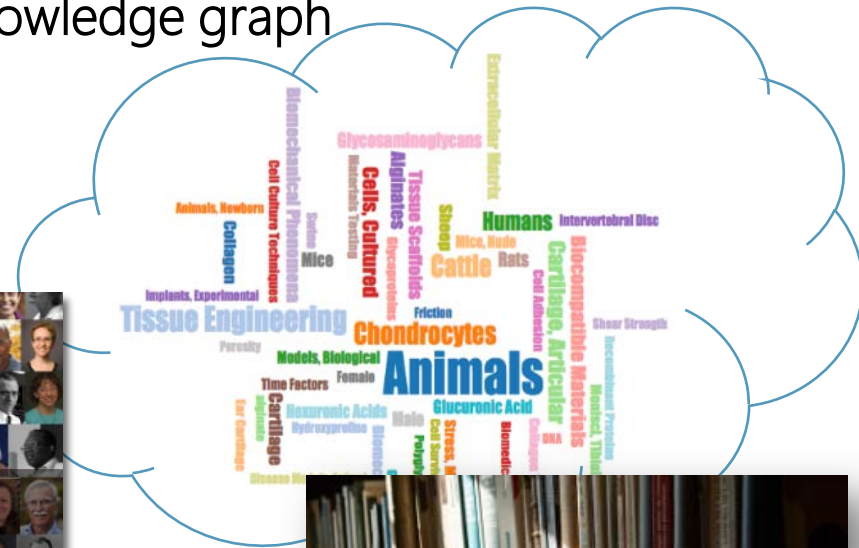


跟踪：<https://teeal.org/what-is-teeal>



# Scholars@Cornell


... Experience the knowledge graph that reveals the dynamics of scholarship



跟踪: <http://scholars.cornell.edu/> (Sandy Payette, Muhammad Javed)

# 工具

- Apache OpenOffice (~~Microsoft Office~~)
- QGIS (~~ArcGIS~~)
- PSPP (~~IBM's SPSS~~)
- GIMP (~~Adobe PhotoShop~~)
- Zotero
- Mendeley
- Wikipedia



谢谢大家  
敬请指教